

ADDENDUM 3

ADDENDUM DATE: August 1, 2016

PROJECT: Onslow County Courthouse Expansion
109 Old Bridge Street
Jacksonville, NC 28540

OWNER: Onslow County
234 NW Corridor Blvd
Jacksonville, NC 28540

ARCHITECT: Smith Sinnett Architecture, P.A.
4600 Lake Boone Trail, Suite 205
Raleigh, North Carolina 27607

BIDS DUE: Tuesday, August 2nd, 2016 at 3:00 p.m.
Onslow County Government Center
234 NW Corridor Blvd.
Room 107
Jacksonville, NC 28540

Please note, Project Addendums and Bidders List are available at www.smithsinnett.com under the 'Documents' icon on the navigation bar.

This Addendum shall be included in the contract for the above referenced project. All General, Supplementary and Special Conditions, etc., as originally specified or as modified below shall apply to these items.

This Addendum consists of (3) pages. Attached documents include: (1) Architectural Drawing with a Revision Date of July 22, 2016.

GENERAL CLARIFICATIONS

- Item 1 Sheet A1-06 was missing in Addendum No. 1 (Items 51-55). It has been added to into the Addendum No. 1 download on the Smith Sinnett website, as well as included with this Addendum.
- Item 2 The General Contractor is responsible for the building permit fees. The Owner is responsible for tap/impact fees.
- Item 3 All references to Brick Sweep are intended to describe a continuous Brick Rowlock Accent.

CHANGES TO SPECIFICATIONS

Section 08 71 00 – Door Hardware

- Item 4 Remove reference to "Everest 29T" from Subparagraph 2.11.D.

Section 09 66 23 – Resinous Matrix Terrazzo Flooring

Item 5 Add Subparagraph 2.1.A.7, to read as follows:

7. Concord Terrazzo Company.

Section 23 33 53 – Duct Liner

Item 6 Modify Subparagraph B.1, to read as follows:

1. Ductwork shall be lined where noted on the plans and details. All transfer ducts shall be lined.

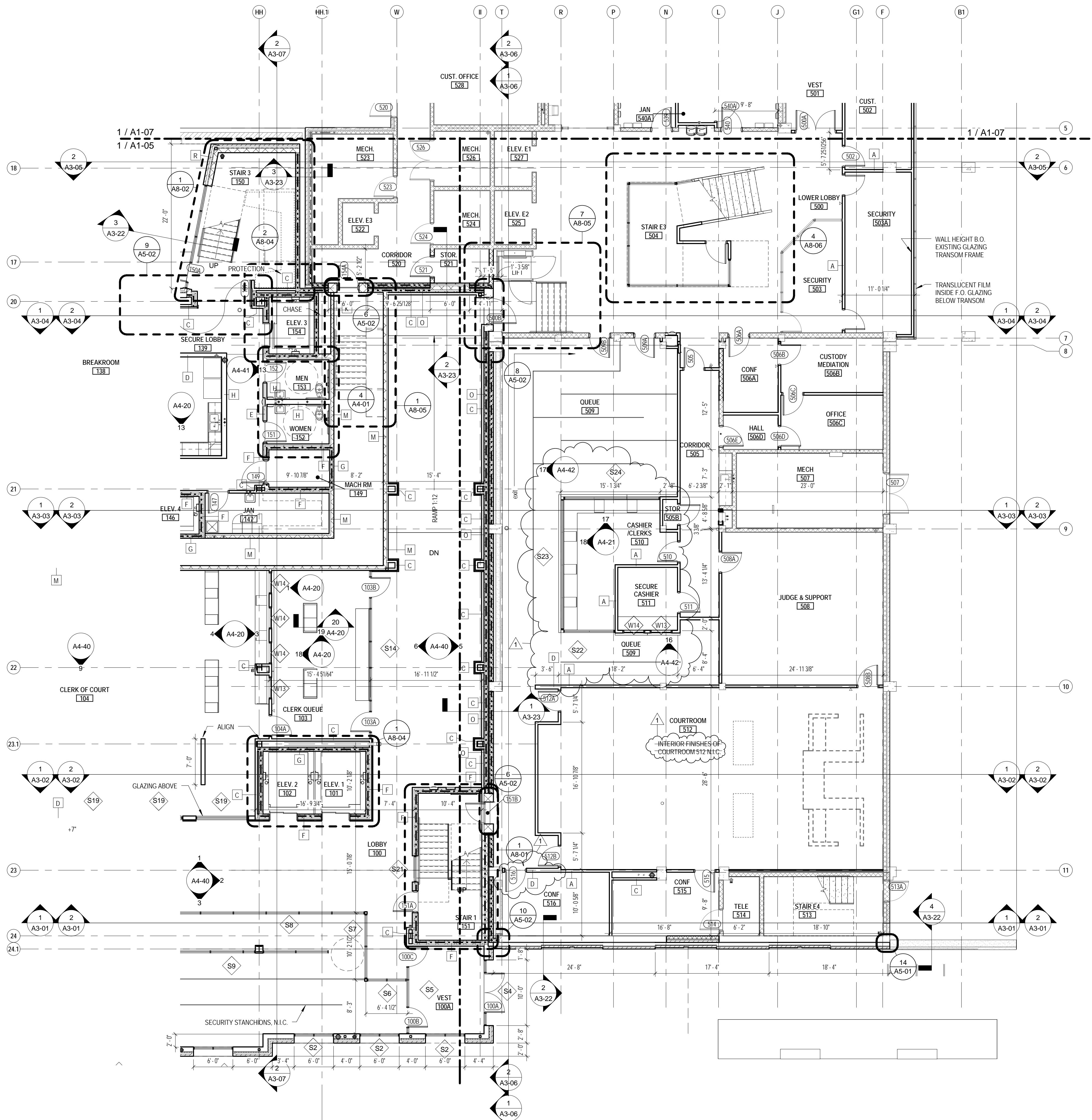
Section 32 31 19 – Decorative Metal High Security Fences & Gates

Item 7 Add BetaFence USA; Palisade-EZ as an approved equal to Subparagraph 2.4.A.2.

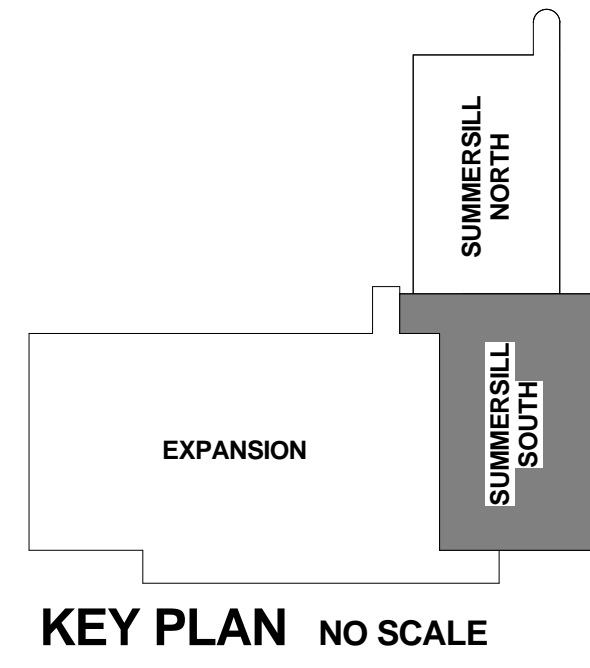
End of Addendum 4

Attached:

Drawing Sheets (1 Page)



1
A1-06
LEVEL 1 - SUMMERSILL (SOUTH)
1/8" = 1'-0"



WALL TYPE SYMBOL LEGEND			
MARK	PLAN SYMBOL	DESCRIPTION	UL DESIGN #
A	[Symbol]	3 5/8" METAL STUD WITH ONE LAYER 5/8" GYP BOARD EACH SIDE UP TO BOTTOM OF DECK	NON-RATED
B	[Symbol]	3 5/8" METAL STUD WITH ONE LAYER 5/8" GYP BOARD EACH SIDE UP TO MIN. 8" ABOVE CEILING	NON-RATED
C	[Symbol]	3 5/8" METAL STUD WITH 5/8" GYP BOARD ON ONE SIDE UP TO 8" ABOVE CEILING	NON-RATED
D	[Symbol]	6" METAL STUD WITH ONE LAYER 5/8" GYP BOARD EACH SIDE UP TO BOTTOM OF DECK	NON-RATED
E	[Symbol]	DOUBLE 3 5/8" METAL STUD STAGGERED WITH ONE LAYER 5/8" GYP BOARD EACH SIDE UP TO BOTTOM OF DECK	NON-RATED
F	[Symbol]	2 1/2" MTL. STUD WALL WITH ONE LAYER 5/8" GYP BOARD ON 1 HR FIRE RATED 8" CMU WALL 2 1/2" MTL. STUD AND GYP BD FURRING TO STOP 8" ABOVE CEILING. 1 HR FIRE RATED MASONRY WALL TO EXTEND TO BOTTOM OF DECK.	UL DESIGN #U906 - 1 HOUR
G	[Symbol]	8" CMU WALL ONE HOUR FIRE RATED UP TO BOTTOM OF DECK	UL DESIGN #U906 - 1 HOUR
H	[Symbol]	8" METAL STUD WITH ONE LAYER 5/8" GYP BOARD EACH SIDE UP TO BOTTOM OF DECK	NON-RATED
J	[Symbol]	8" CMU UP TO JOIST BEARING	NON-RATED
K	[Symbol]	6" CMU UP TO JOIST BEARING	NON-RATED
L	[Symbol]	6" CMU WALL ONE HOUR FIRE RATED UP TO BOTTOM OF DECK	UL DESIGN #U906 - 1 HOUR
M	[Symbol]	2 1/2" MTL. STUD WALL WITH ONE LAYER 5/8" GYP BOARD ON 2 CMU WALL 2 1/2" MTL. STUD AND GYP BD FURRING TO STOP 8" ABOVE CEILING.	NON-RATED
N	[Symbol]	2 1/2" MTL. STUD WALL WITH ONE LAYER 5/8" GYP BOARD ON 2 HR FIRE RATED 8" CMU WALL 2 1/2" MTL. STUD AND GYP BD FURRING TO STOP 8" ABOVE CEILING. 2 HR FIRE RATED MASONRY WALL TO EXTEND TO BOTTOM OF DECK.	UL DESIGN #U906 - 2 HOUR
O	[Symbol]	8" CMU WALL TWO HOUR FIRE RATED UP TO BOTTOM OF DECK	UL DESIGN #U906 - 2 HOUR
X	[Symbol]	12" CMU WALL TWO HOUR FIRE RATED UP TO BOTTOM OF DECK	UL DESIGN #U906 - 2 HOUR
Z & Z1	[Symbol]	2" STEEL TRUSS CELL PANEL SYSTEM. 2 1/2" METAL STUD FURRING WITH ONE LAYER 5/8" GYP BOARD UP TO BOTTOM OF DECK 2 1/2" - 2" STEEL TRUSS CELL PANEL SYSTEM ONLY, NO FURRING	NON-RATED
P	[Symbol]	BRICK ON METAL STUD WITH ONE LAYER OF 5/8" REINFORCED FIBERGLASS SHEATHING *REFER TO A3 WALL SECTIONS FOR MTL. STUD DEPTHS / DIMS	NON-RATED

- NOTES:**
- ALL INTERIOR WALL TYPES TO BE 'A' UNLESS OTHERWISE NOTED.
 - ALL EXTERIOR WALL TYPES TO BE 'P' UNLESS OTHERWISE NOTED.
 - WALL DIMENSIONS ARE TO FACE OF METAL STUD, FACE OF CONCRETE MASONRY UNIT (CMU), OR CENTERLINE OF COLUMN.
 - ALL RATED WALL CONSTRUCTION TO COMPLY WITH UL REQUIREMENTS.
 - ALL CMU WALLS GOING TO BOTTOM OF DECK ARE TO PROVIDE A 1" GAP FOR DEFLECTION, FILL GAP WITH MINERAL WOOL INSULATION ALONG THE ENTIRE LENGTH OF WALL. AT FIRE RATED WALLS, ENSURE SPRAY APPLIED FIRE SEALANT BOTH SIDES.
 - ALL METAL STUD WALLS TERMINATING AT BOTTOM OF DECK ARE TO PROVIDE A DEFLECTION TRACK SECURED TO THE UNDERSIDE OF THE DECKING, NEST TOP TRACK BUT DO NOT ATTACH TO DEFLECTION TRACK. FILL FLUTE IN METAL DECK WHERE REQUIRED.
 - ALL WALLS EXTEND TO DECK AND ARE BRACED TO DECK AT HEAD ON ALTERNATE STUDS OR 32" OC FOR CMU WALLS, UNLESS OTHERWISE NOTED.
 - CONTROL JOINTS SHALL BE AS SHOWN ON PLANS AND ELEVATIONS OR SPACED AT A MINIMUM OF 20'-0" OC AND A MAXIMUM OF 32'-0" OC WITH ONE CONTROL JOINT LOCATED WITHIN 3'-4" OF ANY CORNER. FOR INTERIOR GYPSUM WALL CONTROL JOINTS SEE DETAIL.
 - SEE FINISH SCHEDULE FOR WALL, FLOOR, BASE, AND CEILING TYPES AND FINISHES.
 - REFER TO STRUCTURAL DRAWINGS FOR LOCATION OF REINFORCING, BOND BEAMS, BRACING, ETC.
 - ALL COLUMN CHASES TO HAVE GYP BOARD ON ROOM SIDE OF WALL, TYPICAL UNLESS OTHERWISE NOTED.
 - ALL EXTERIOR SIDEWALKS SHALL SLOPE AWAY FROM THE BUILDING AT 1/4" PER FOOT, MINIMUM.
 - ALL EXTERIOR WINDOWS TO HAVE ROLLER SHADE BLINDS UNLESS OTHERWISE NOTED, REFER TO SPECIFICATIONS.
 - FURNITURE AND EQUIPMENT SHOWN DASHED ON PLANS IS NOT IN CONTRACT (NIC). GC TO PROVIDE WOOD BLOCKING FOR ALL WALL/CEILING MOUNTED ACCESSORIES.
 - FIELD VERIFY FINAL ROOM DIMENSIONS PRIOR TO CASEWORK FABRICATION.
 - WARP SLAB DOWN 1" IN A 7'-0" X 7'-0" SQUARE AROUND ALL FLOOR DRAINS.
 - ALL CERAMIC TILE TO HAVE CONTROL JOINTS THAT ALIGN WITH CONTROL JOINTS IN CONCRETE SLAB.
 - THERE SHALL BE NO PENETRATIONS IN THROUGH WALL FLASHING.
 - DOOR JAMB FROM INTERSECTING WALLS: CMU - 8" UNLESS OTHERWISE NOTED
STUD - 4" UNLESS OTHERWISE NOTED

SMITHSINNETT architecture

1919 781 8592
F 919 781 8779
4600 Lake Boone Trail
Raleigh, NC 27607
info@smithsinnett.com

BID DOCUMENTS

ONSLOW COUNTY
COURTHOUSE EXPANSION
BID DOCUMENTS
109 OLD BRIDGE STREET, JACKSONVILLE, NC

2/27/2016 4:17:59 PM
C:\Users\Ballew\Documents\2015014_Onslow Co Courthouse_2016\BID_ball@smithsinnett.com.rvt

THIS DRAWING IS FORMATED TO BE PRINTED ON A 24" X 36" SHEET

07/22/2016 ADDENDUM #1

ID	DATE	DESCRIPTION

DRAWN BY: Author

CHECKED BY: BEA

FIRST FLOOR PLAN - SUMMERSILL (SOUTH)

2015014 ## of ## 05 JULY 2016

A1-06